

# SUNSTONE METALS



## Resource Investor Lunch Presentation



**STM**

14 March 2024

# Disclaimer

---

## DISCLAIMER

To the maximum extent permitted by law, no representation, warranty or undertaking, express or implied, is made and, to the maximum extent permitted by law, no responsibility or liability is accepted by Sunstone or any of its officers, employees, agents or consultants or any other person as to the adequacy, accuracy, completeness or reasonableness of this Presentation. To the maximum extent permitted by law, no responsibility for any errors or omissions from this Presentation whether arising out of negligence or otherwise is accepted.

This Presentation contains general information about Sunstone Metals Limited (Sunstone) which is in the business of exploring for minerals which is a speculative and risky venture. It does not purport to contain all the information that a prospective investor may require. The Presentation should not be considered as an offer or invitation to subscribe for or purchase of any securities in Sunstone and no agreement to subscribe for securities will be entered into on the basis of this Presentation. Potential investors should conduct their own investigation and analysis and should check the accuracy, reliability, and completeness of the information provided and obtain independent and specific advice from appropriate professional advisors.

## FORWARD-LOOKING STATEMENTS

This Presentation includes certain statements that may be deemed “forward-looking statements”. All statements in this Presentation, other than statements of historical facts, that address future activities and events or developments that Sunstone expects, are forward looking statements.

Although Sunstone believes the expectations expressed in such forward-looking statements are based on reasonable assumptions, such statements are not guarantees of future performance and actual results or developments may differ materially from those in the forward-looking statements. Factors that could cause actual results to differ materially from those in forward-looking statements include market prices, continued availability of capital and financing, and general economic, market or business conditions.

Investors are cautioned that any such statements are not guarantees of future performance and that actual results or developments may differ materially from those projected in forward-looking statements.

# Sunstone Snapshot

Ecuador focussed, gold-copper explorer and discoverer

**ASX**

**Market Capitalisation <sup>1</sup>**

**Cash and Equities <sup>2</sup>**

**MRE – Brama-Alba Porphyries**

**Exploration Targets – Bramaderos**

**Porph+Epithermals**

**Shares on Issue**

**Top 20 Shareholding**

**Institutional and Family Office Shareholding**

***Mason Stevens***

***Ilwella***

***Board and Management***

**STM**

**A\$42 mill**

**~A\$4.9 mill**

**2.7Moz AuEq<sup>3</sup>**

**4.2 – 10.3Moz AuEq<sup>3</sup>**

**3,501 million**

**36%**

**35%**

**7.5%**

**5.3%**

**5.0%**



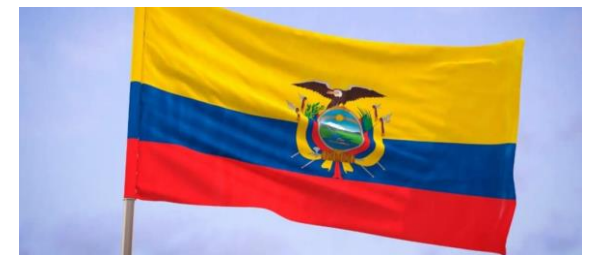
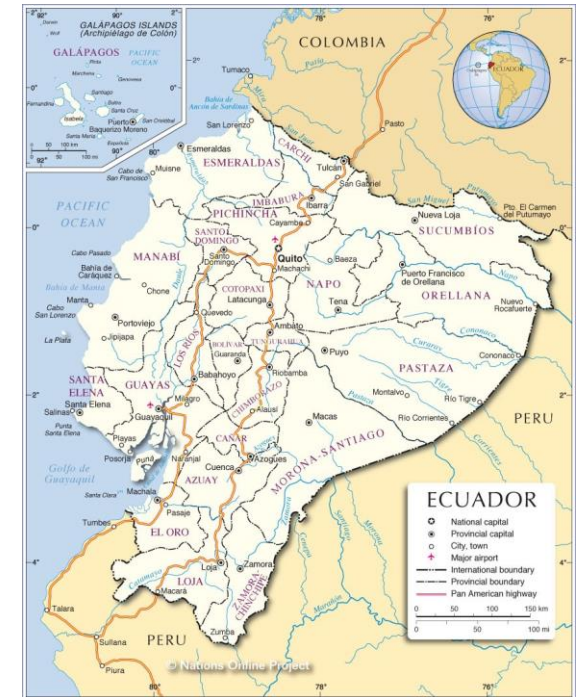
<sup>1</sup> based on share price of A\$0.012

<sup>2</sup> At December 31, 2023

<sup>3</sup> see slides 8, 19, 20 for full details

# Ecuador

- **Pro-responsible mining**
- President Daniel Noboa recently presented at PDAC in Toronto and strongly reinforced mining and foreign investment in Ecuador
- Investment agreements being signed for the most advanced projects (SolGold Cascabel, Adventus/Luminex Condor)
- Security issues being well addressed
- Permitting timelines improving
- Significant investment flowing to development projects and exploration – recent example of Hancock investing US\$120mill to earn 49% in 6 concessions in northern Ecuador; Zijin US\$130mill into Solaris (Warintza porphyry)
- 2 modern operating mines (including one of the world’s best gold deposits in Fruta del Norte)
- Several advanced projects – 1 to start construction in 2024
- Forms part of the worlds most endowed copper gold belt
- All majors present (BHP, Anglo, Barrick, Codelco)
- **Mining is a significant contributor to GDP, and this will grow strongly**



# The Sunstone Opportunity

---

- Key messages
  - ***Exposure to 2 giant gold-copper-silver exploration and development assets***
  - ***Bramaderos is a significant staged development and discovery opportunity, with line of sight to 10Moz gold equivalent (gold-copper-silver)***
    1. ***near surface high-grade gold-silver, e.g. Limon - EXPLORATION TARGET OF 0.9 – 1.7 mill oz AuEq\* (gold+silver), and***
    2. ***near surface large tonnage porphyry gold-copper-silver, e.g. Brama-Alba, Melonal, Limon - MRE 2.7 mill oz AuEq (gold+copper+silver) PLUS EXPLORATION TARGET 3.3 – 8.6 mill oz AuEq (gold+copper+silver)\****
  - ***El Palmar and Verde Chico two complimentary opportunities exist***
    1. ***near surface high-grade gold-silver at Verde Chico and El Palmar, and***
    2. ***near surface to deep large tonnage porphyry gold-copper-silver, e.g. T1 to T5 targets at El Palmar over an area 2.5 x 1km***

\* See slides 19 & 20 for details of Exploration Targets and Mineral Resources



# ESG considered across the business



Sunstone appreciates the strong community support that it has at its projects and takes its **environmental, social and governance** issues very seriously. It is committed to advance its social performance in the areas where we work

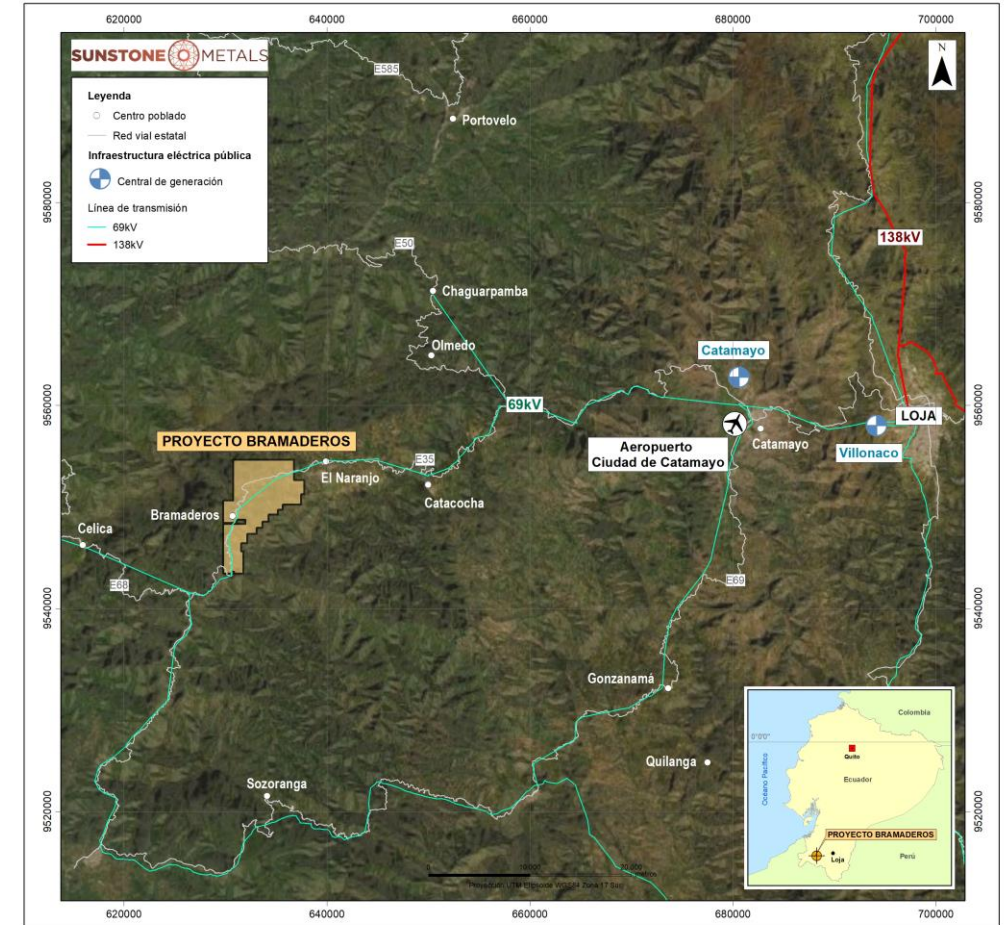
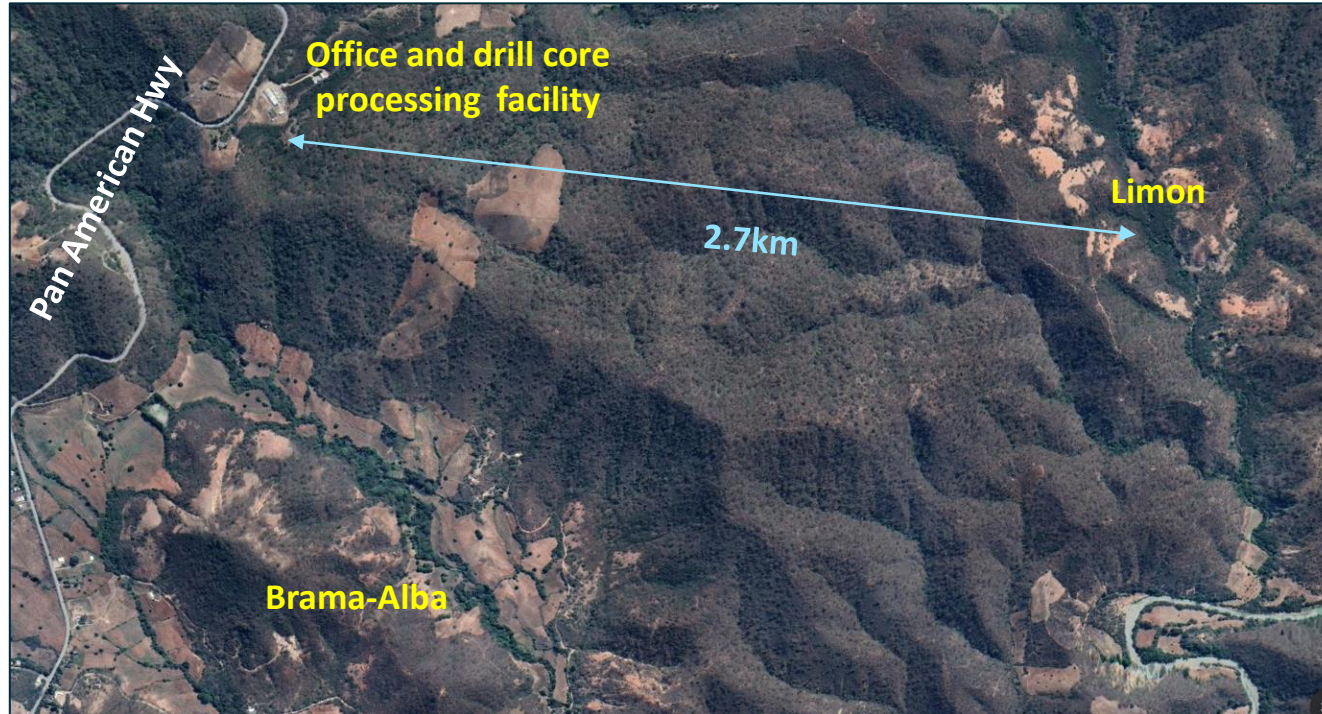
## Inaugural Sustainability Report Released November 27, 2023

Sunstone

- has significant **environmental monitoring programs** across its projects
- is involved in various **community programs** at Bramaderos and El Palmar
- undertakes considerable **training programs** across a large range of skills for workers and the communities in which we operate
- **works with the local communities** to assist where possible, for example, during the coronavirus pandemic
- offers employment and skills development
- has implemented strict coronavirus operating plans while not compromising local health and safety



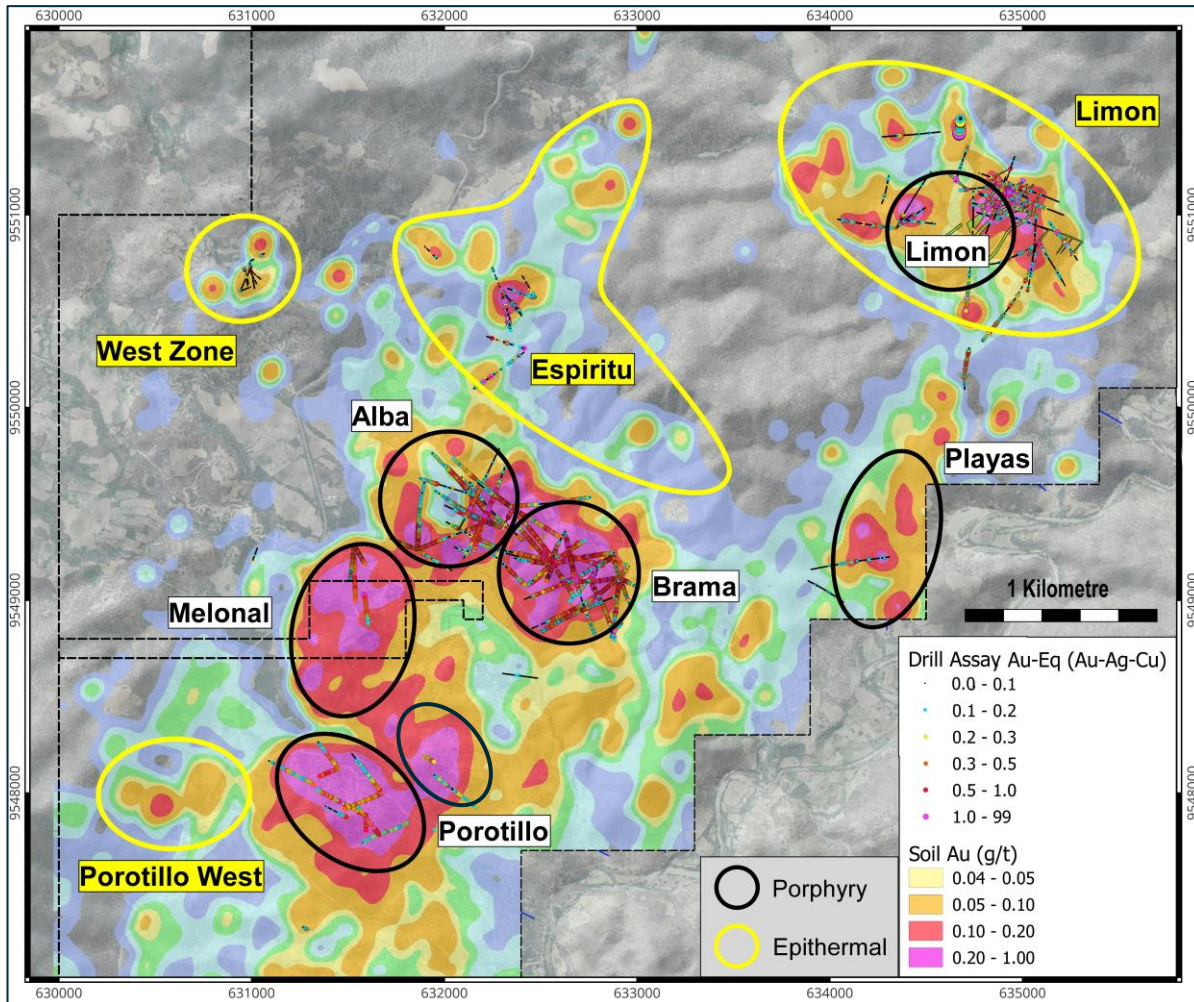
# Bramaderos, Southern Ecuador



- 4,984 ha concessions
- Adjacent to the Pan American Highway
- At ~900m asl
- The project is supported by good infrastructure (hydroelectric power, regional airport nearby)
- 93% of Ecuador's power is generated from renewables, primarily hydro power



# Bramaderos – targeting 10Moz opportunity



Background image is gold-in-soils

## LIMON - gold-silver epithermal and porphyries

### Epithermal gold and silver (2023 discovery)

Exploration Target 0.9 – 1.7 mill oz AuEq, at 0.9-1.2g/t AuEq\*<sup>1</sup> from surface

### Porphyry gold-copper-silver

97.6m at 0.71g/t gold and 0.23% copper in trench  
79m at 0.52g/t gold, 0.19% copper, 9.4g/t silver from 90m in LMDD010

## BRAMA-ALBA only - Mineral Resource estimate - 2022

156Mt at 0.53g/t AuEq (0.35g/t gold, 0.11% copper, 1.3g/t silver) for 2.7Moz AuEq\*<sup>2</sup> pit constrained, from surface

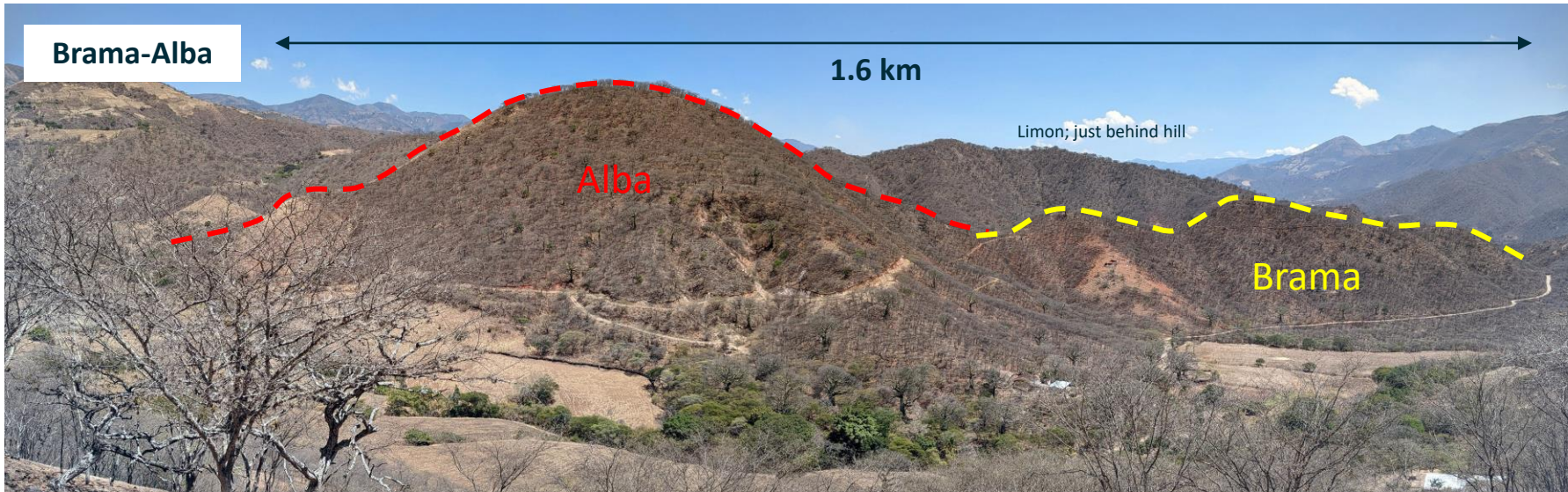
## Porphyry Exploration Target - 2022 in addition to MRE

255 - 360Mt for 3.3 to 8.6Moz AuEq \*<sup>3</sup>

\*<sup>1</sup> Limon epithermal AuEq is based on gold+silver only  
See pages 19 & 20 for \*<sup>1</sup>, \*<sup>2</sup> and \*<sup>3</sup> details



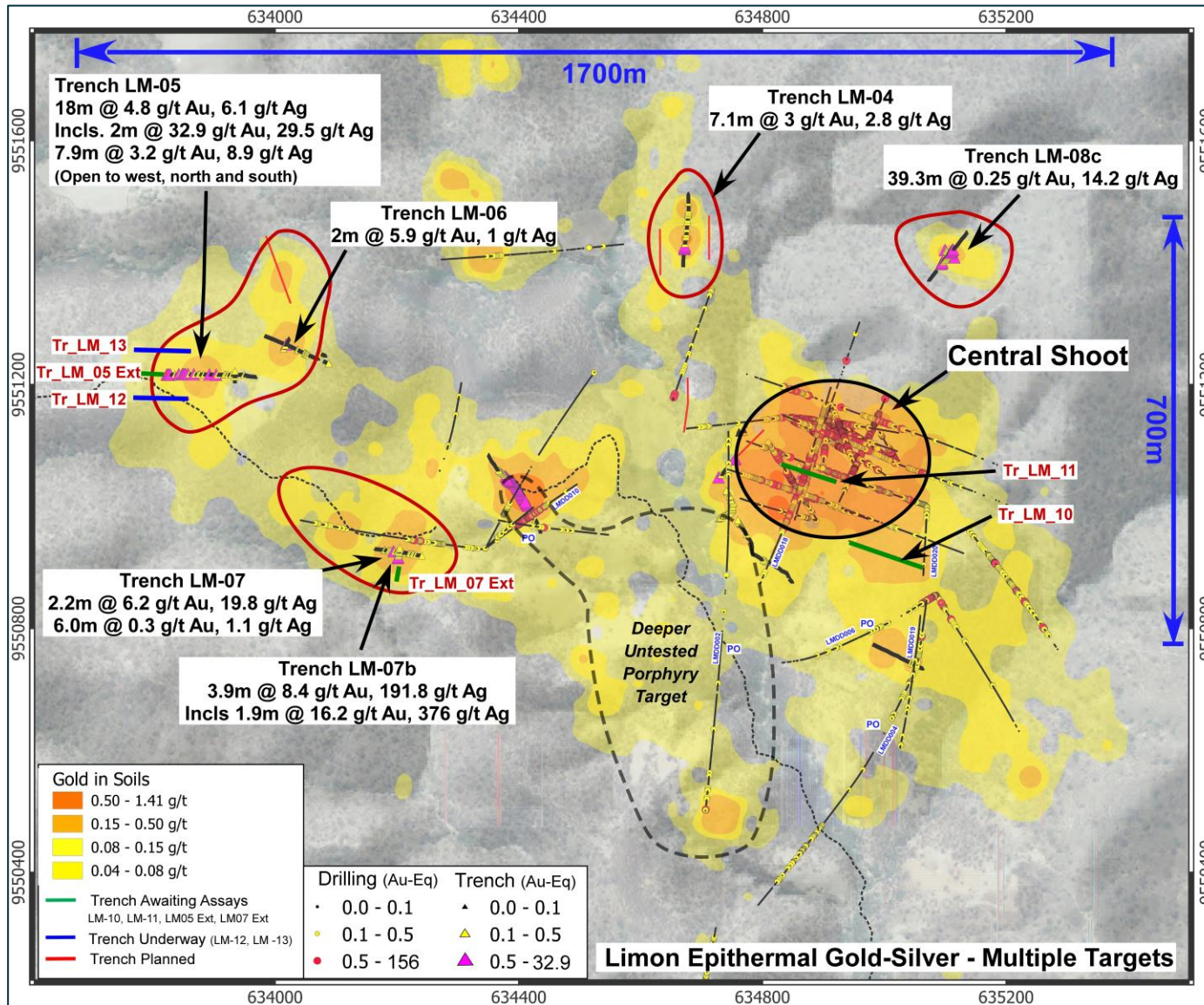
# Brama-Alba + Limon – mineralisation from surface



- **Brama-Alba** targets – MRE undertaken by Tier 1 consultants CSA (pit constrained, reasonable prospects)
- 1.6km long mineralised system – so far
- Outcropping gold-copper-silver
- Development would initially mine a hill – very low strip ratio
- Higher grade domains close to surface
- Many opportunities to grow resource, and define higher grades
- **Limon** epithermal gold-silver target - 1.7km x 700m epithermal system centered with gold-copper-silver porphyry
- Outcropping gold-silver with high grade domains
- Many opportunities to grow resource, and define higher grades



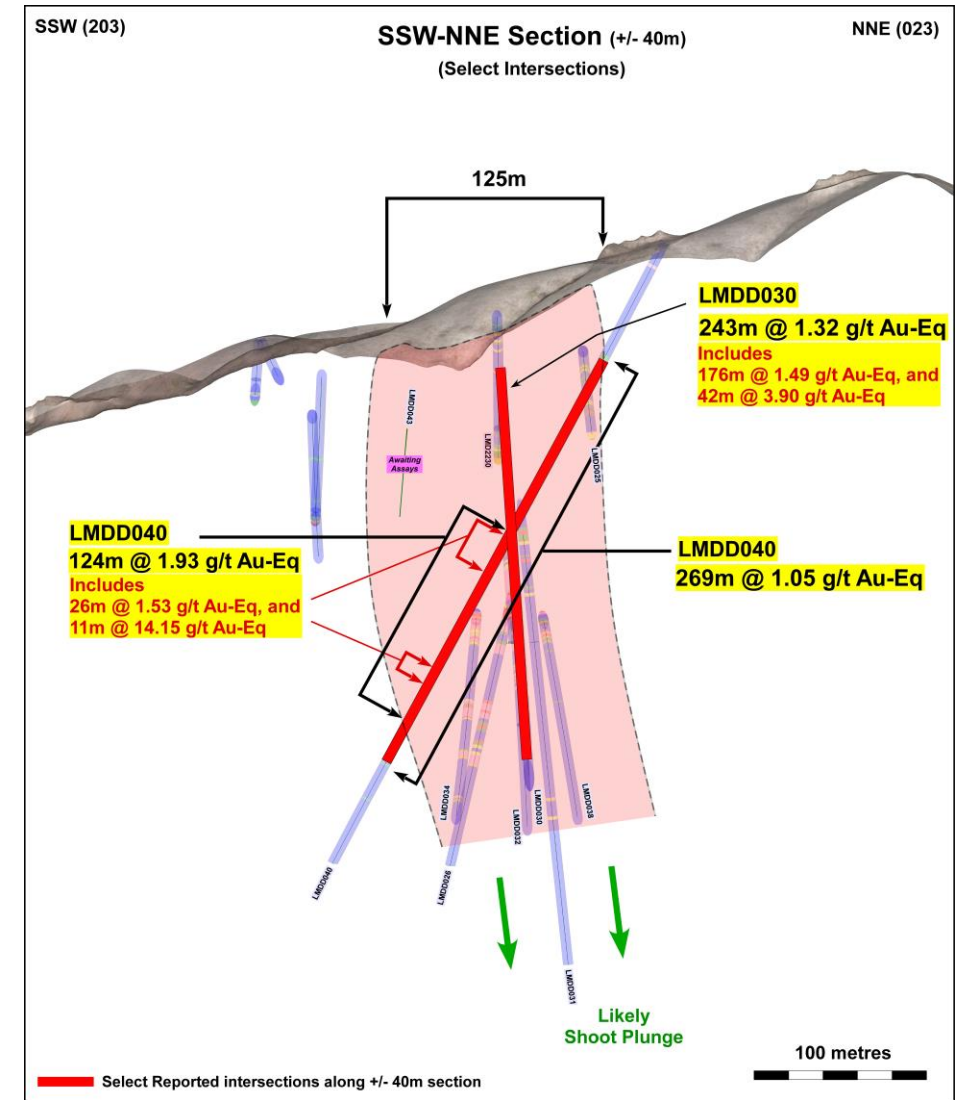
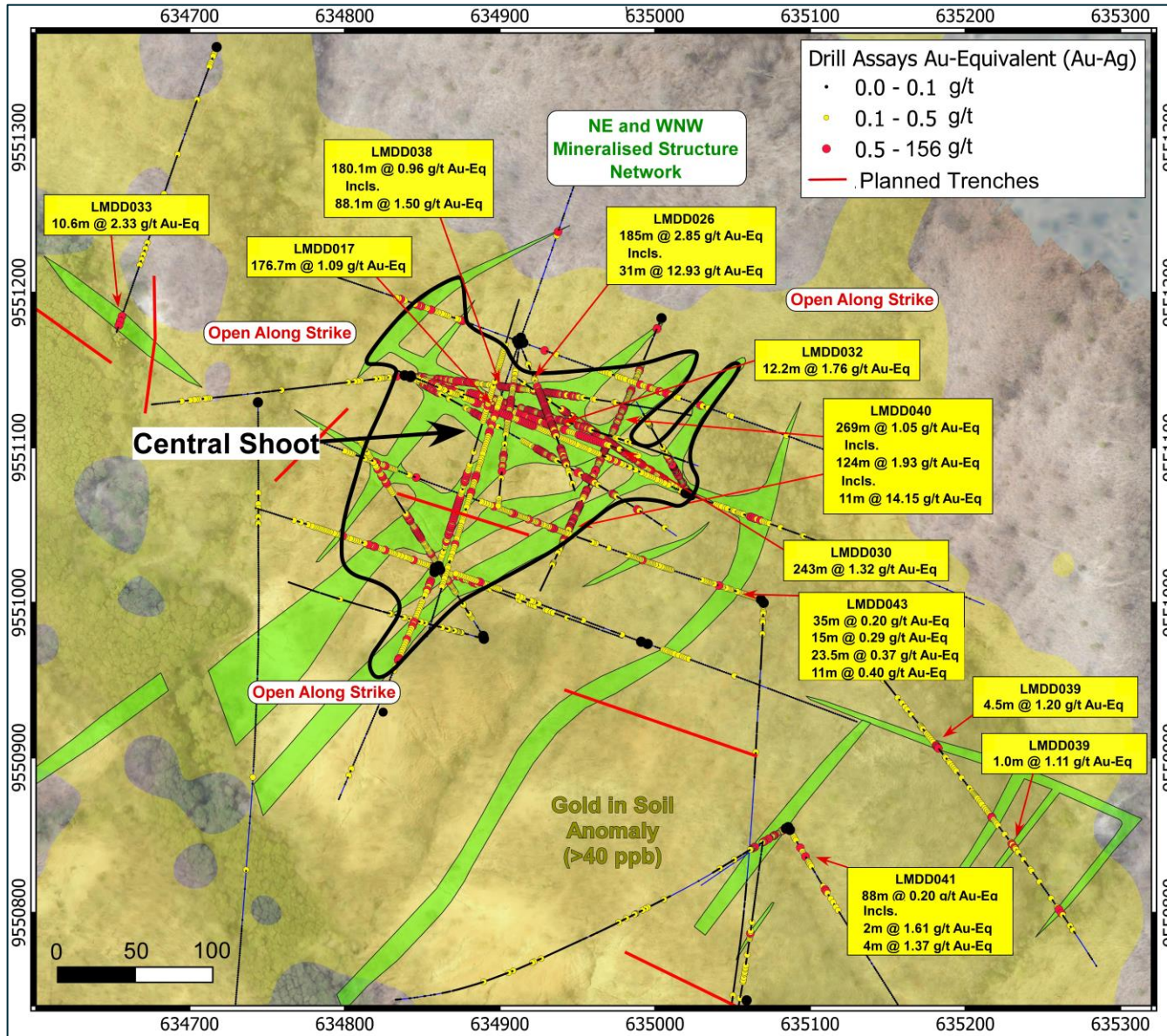
# Limon – gold-silver epithermal



- Very significant discovery; delivers the higher-grade front end for a larger Bramaderos development
- Large search space for epithermal gold-silver-base metal mineralisation
- Evidence of epithermal veins to depths exceeding 600m from previous drilling
- Evidence of multiple epithermal vein occurrences within 1.7km x 700m Limon alteration zone
- Current interpretation of mineralised structures trending NW and NE, and higher grades developed at the intersections of these structures



# Limon – gold-silver epithermal



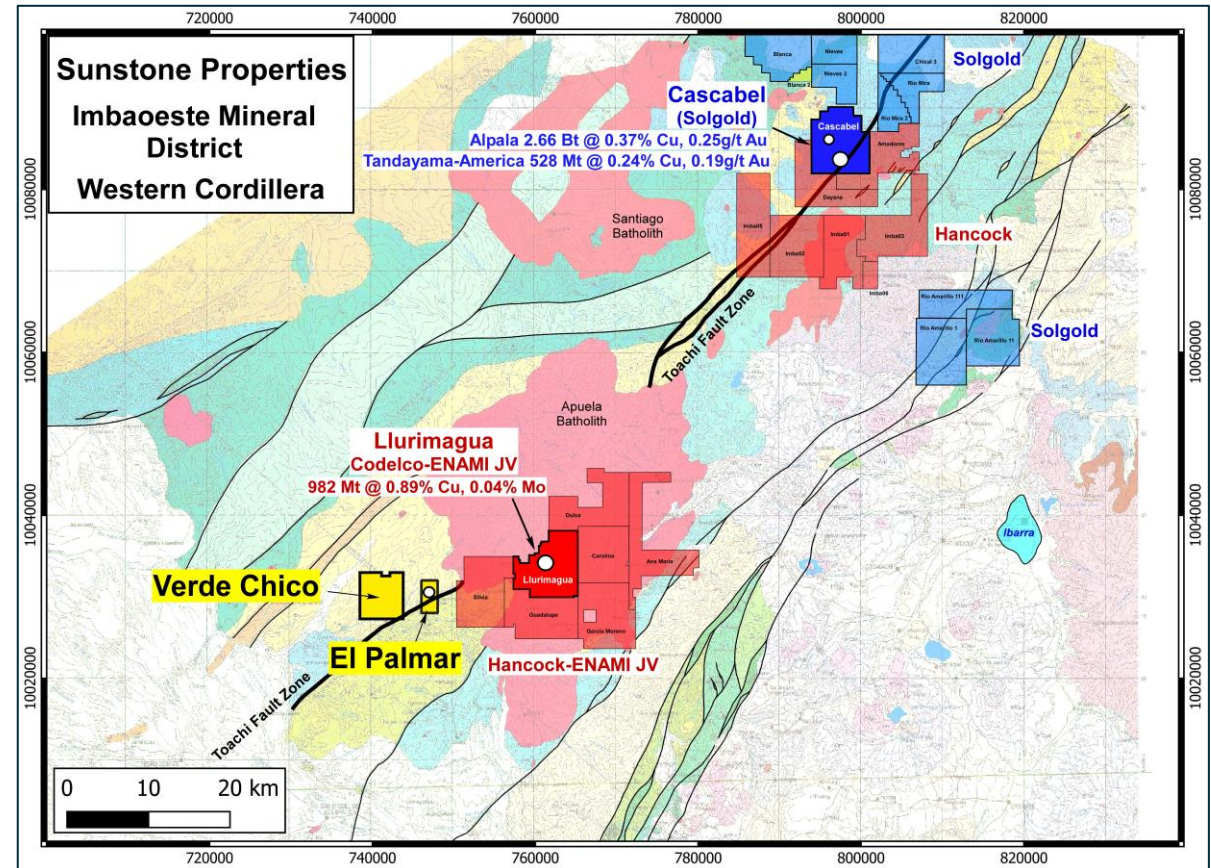
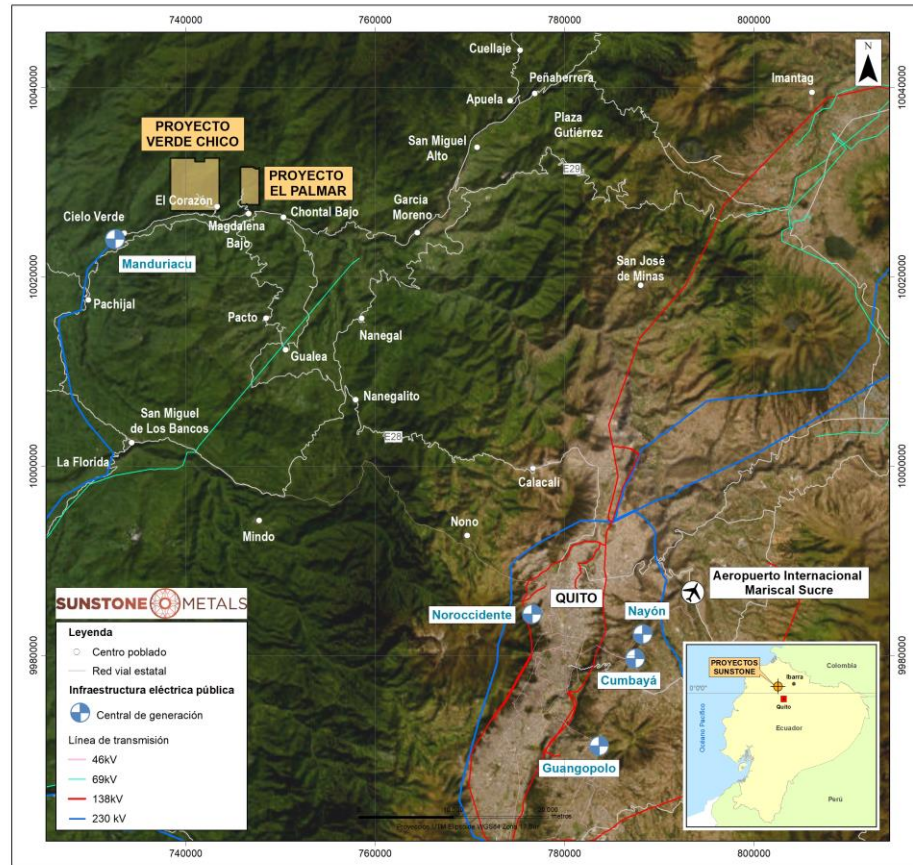


# Bramaderos – gold-copper-silver camp

---

- **Aiming to deliver 10 million ounce gold equivalent camp**
- **Current Porphyry MRE – 2.7Moz AuEq –gold-copper-silver, Brama-Alba porphyry only**
- **Current Porphyry Exploration Target, in addition to above MRE – 3.3 – 8.6 Moz AuEq – gold-copper-silver; Brama-Alba-Melonal porphyries**
- **Limon Epithermal Exploration Target, in addition to above - 0.9 – 1.7 Moz AuEq - gold-silver (with high grade domains)**
- Possible staged development scenario is taking shape –
  - Higher grade starter development from Limon gold-silver deposit, but may grow to be significant development in its own right
  - Optionality for expansion to capture large lower grade porphyry gold-copper-silver development (multiple targets)
  - Both ‘at surface’, open pits, low strip ratio, much infrastructure in place, low-cost power
  - Strategic land acquisitions
  - Potential for global Tier 2 deposit (by definition >250,000oz pa, min. 10 year mine life, sub US\$1,000 AISC)

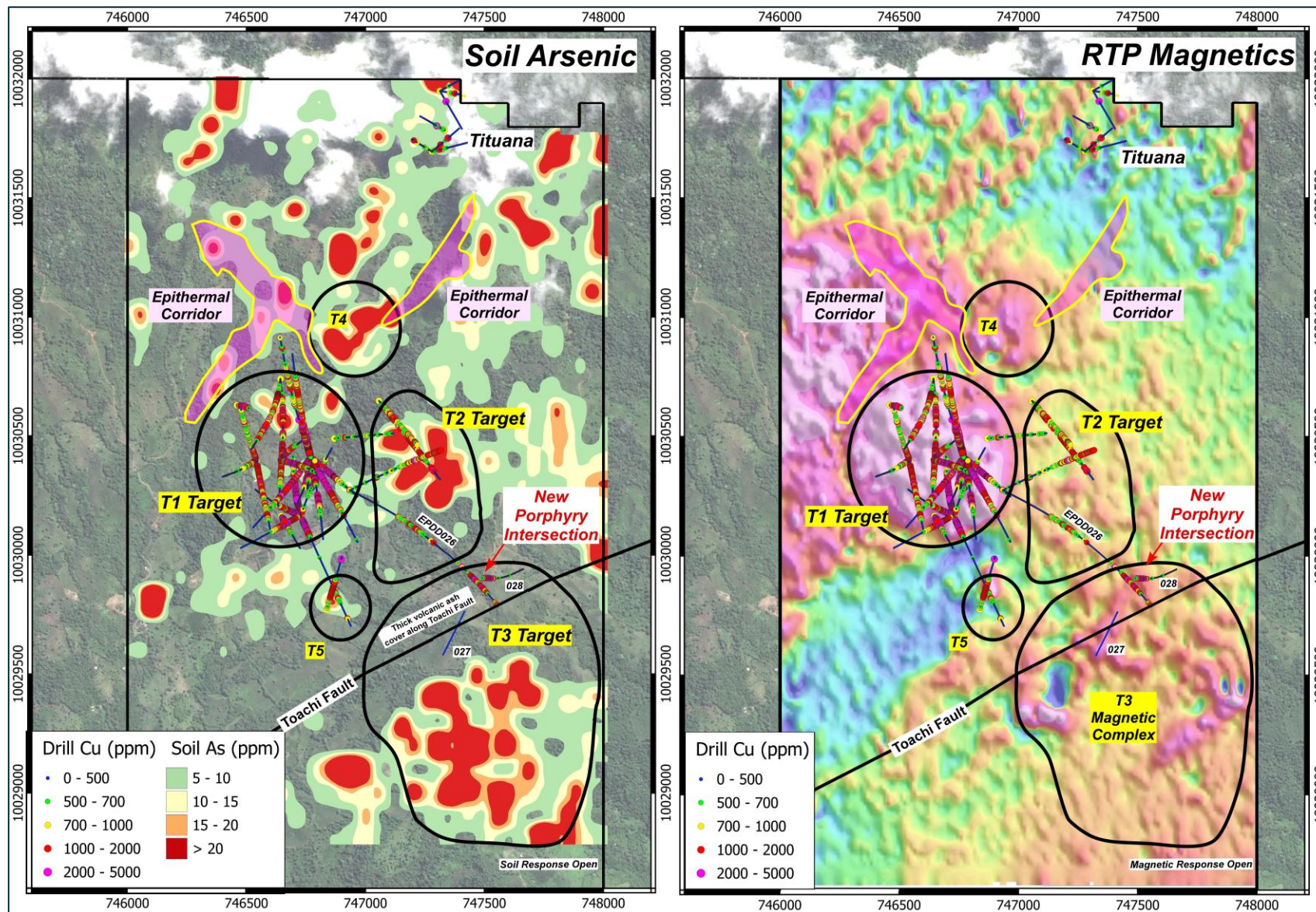
# El Palmar, northern Ecuador



- Same belt as the 2.7Bt Alpala copper-gold porphyry deposit (0.53% CuEq) at Cascabel, the 0.53Bt Tandayama-America copper-gold porphyry deposit (0.36% CuEq) at Cascabel, and the 1Bt Llurimagua copper-moly porphyry deposit (1.0% CuEq)
- **Immediately west of the recently announced US\$120mill exploration expenditure agreement between Hancock Prospecting and ENAMI**
- Highly prospective belt of rocks related to the Toachi Fault Zone
- 3,671 ha total concession coverage



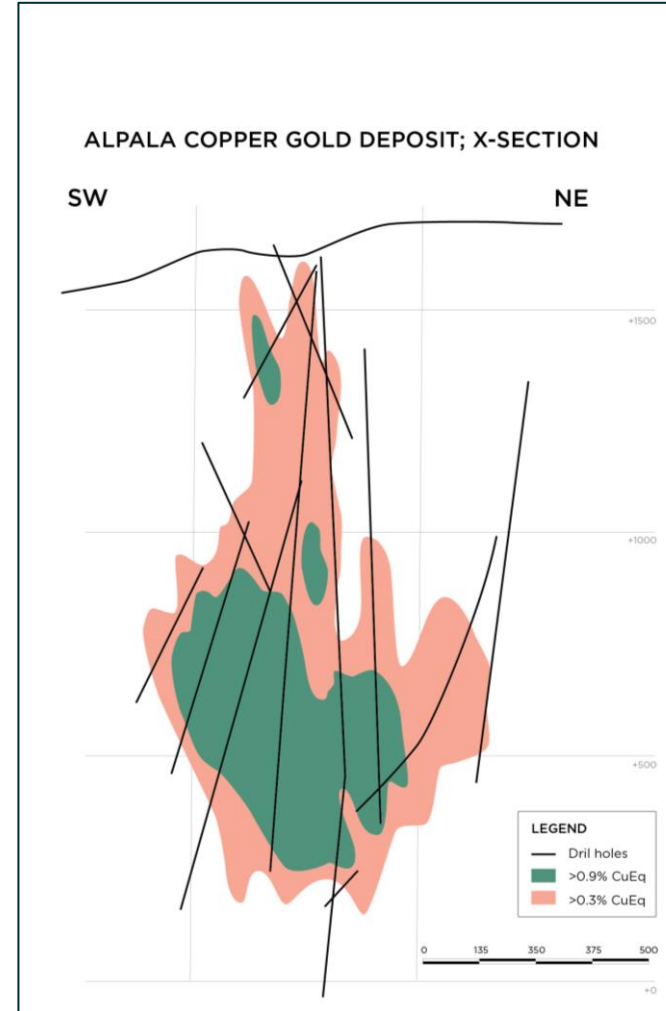
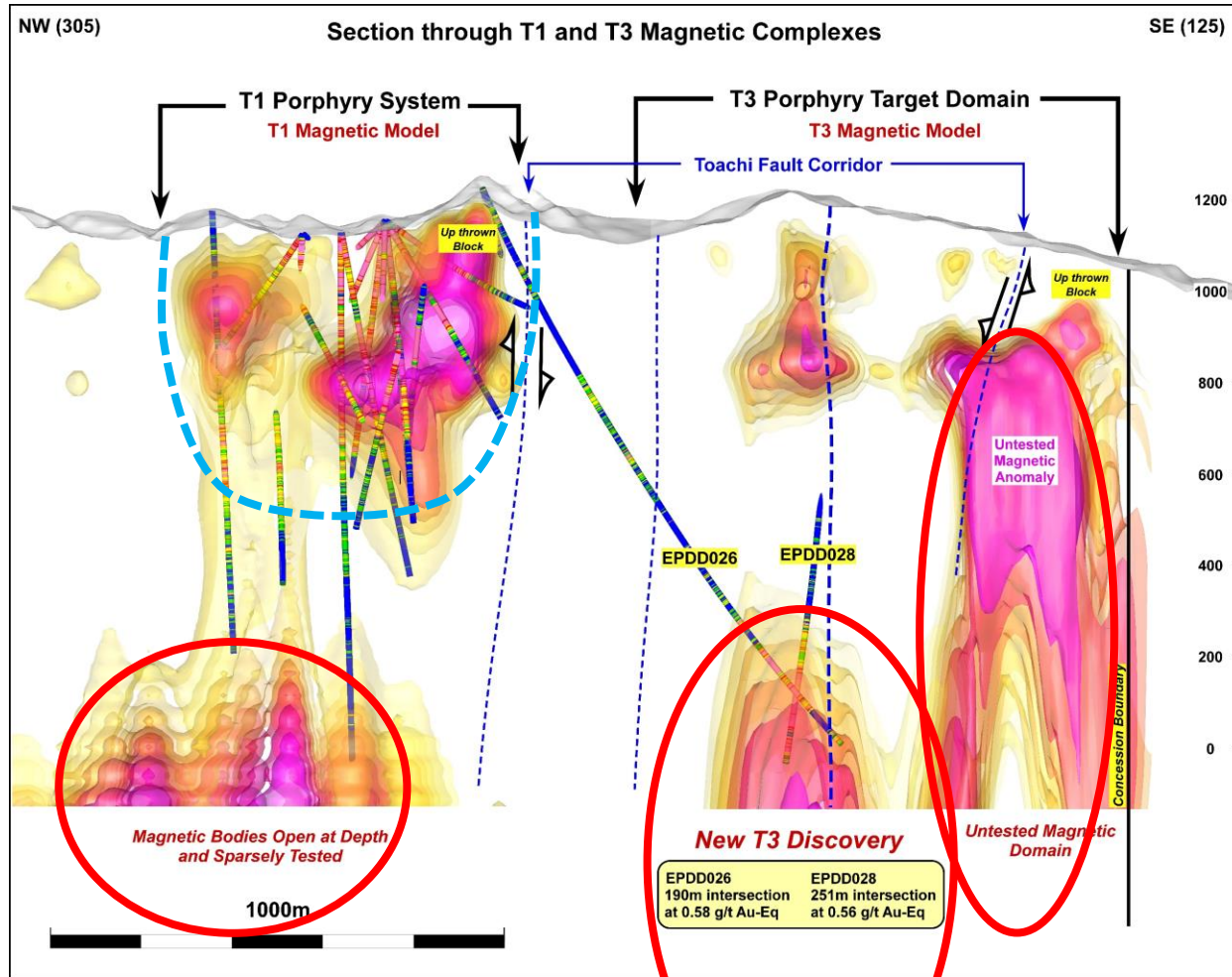
# El Palmar - 5 porphyry gold-copper centres



- Mineralisation from surface at T1, T2, and T5
- Mineralisation at depth at T3 and T4
- 2.3km long cluster of porphyry targets identified to date; T1 to T5
- Results from holes EPDD026 and 028 in T3 are extremely significant – first holes into a large target delivering ore grade mineralisation. Drill hole intersections are deep, but targets extend towards surface.
- Potential to deliver a very large gold-copper deposit camp



# El Palmar - multiple large targets

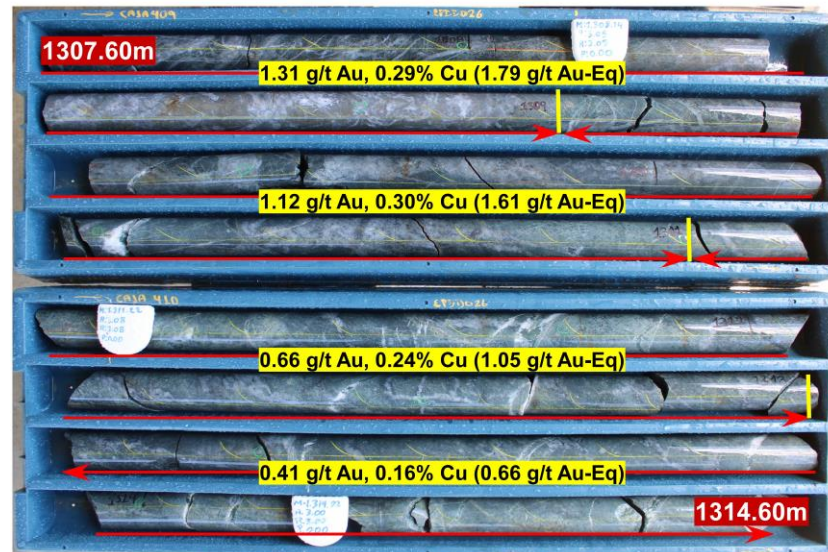
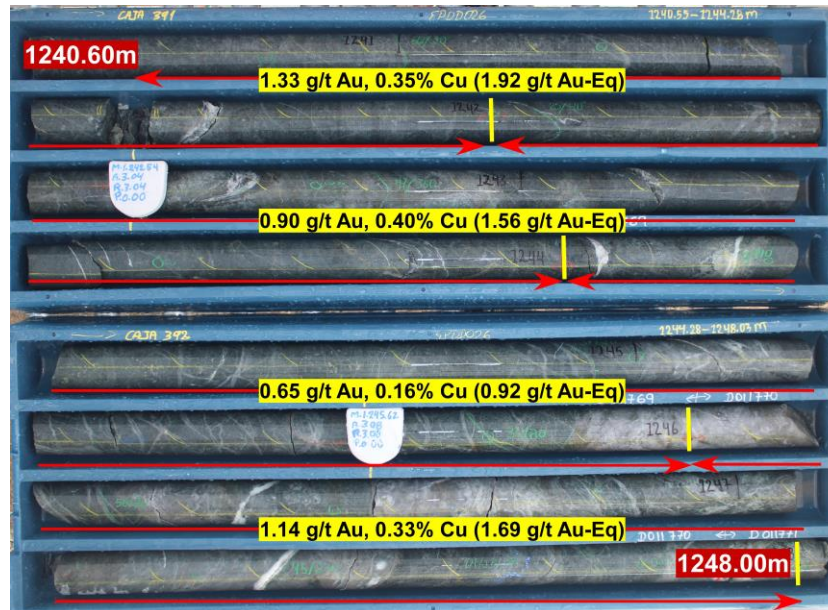


- **T1**; 800m long (in NW-SE orientation) already an orebody in its own right
- **T1**; 21 drill holes completed, gold-copper from surface to 500m below surface, intersections include 160m at 0.7g/t gold and 0.2% copper from 52m (LMDD001)
- **T3**; EPDD026 and 028 intersections deep but coincident magnetic anomalies extend towards surface

- Cross section, same scale comparison with the 3Bt Alpala deposit at Cascabel (SolGold)
- Depth to top of the main Alpala orebody is ~700m

# El Palmar – locally strong grades

EPDD026



Targets T1 to T5 could all be related and have geometries that relate to their position on or adjacent to the Toachi fault

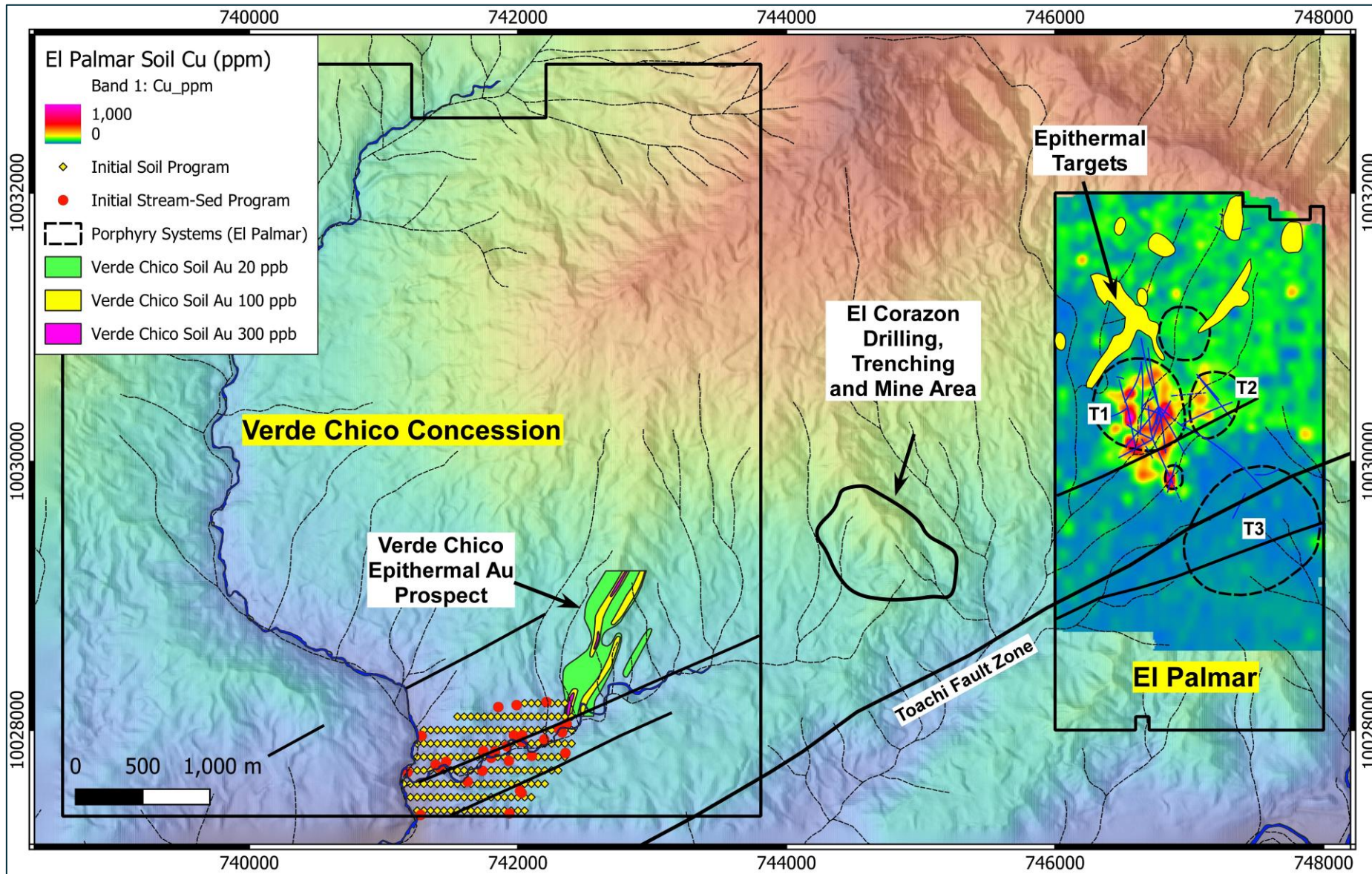
Porphyries have very large vertical extent – can be > 1,000m

EPDD026 and 028 grades suggest the T3 system can deliver very high grades relative to other porphyry deposits

Depth and vertical extent of El Palmar opportunities are in line with major company exploration search space



# El Palmar – Verde Chico



- Exploration at Verde Chico has commenced with initial follow-up to the known high-grade gold mineralisation
- Potential to define both porphyry copper-gold and epithermal gold opportunities
- Historical exploration from the 1990's includes
  - Perdida vein - 6.5m @ 25.11 g/t Au
  - Peligrosa vein - 24m @ 21.2 g/t Au, 19m @ 7.72 g/t Au, 25m @ 10.24 g/t Au
  - Gato vein - 39m @ 3.08 g/t Au
  - Pavas vein - 26.5 @ 2.28 g/t Au, 10m @ 11.72 g/t Au
  - Oso Hormiguero vein - 29m @ 8.26 g/t Au, 11m @ 9.08 g/t Au
  - Falla vein - 8m @ 7.28 g/t Au



# What's ahead

---

- ✓ **Bramaderos**
  - **Limon gold-silver epithermal discovery has fundamentally changed Bramaderos**
  - **Ongoing low-cost trenching leading to drilling resuming at Limon**
  - Deliver **additional discoveries** at Melonal, Melonal SE, Limon porphyries, Porotillo, and other epithermals
  - **Strengthen expectation of 10Mozs AuEq district with Exploration Target updates**
  - **Preparation for Limon MRE, and Limon + porphyry Scoping Studies**
- ✓ **El Palmar**
  - Continue to advance **porphyry gold-copper and epithermal gold-silver opportunities through low-cost trenching**
  - **Preparation for Exploration Target and resumption of drilling**
  - **Strengthen giant gold-copper-silver potential**
- ✓ **Verde Chico**
  - Advance exploration to demonstrate high-grade gold system of considerable scale
  - Expands district opportunities

# Competent Persons Statement

---

## Competent Persons Statement

The information in this report that relates to Mineral Resources is based on information compiled by Mr Aaron Meakin. Mr Aaron Meakin is a full-time employee of CSA Global Pty Ltd and is a Member and Chartered Professional of the Australasian Institute of Mining and Metallurgy. Mr Aaron Meakin has sufficient experience relevant to the style of mineralisation and type of deposit under consideration and to the activity which he is undertaking to qualify as a Competent Person as defined in the 2012 Edition of the Australasian Code for the Reporting of Exploration Results, Mineral Resources and Ore Reserves (JORC Code). Mr Aaron Meakin consents to the disclosure of the information in this report in the form and context in which it appears.

## Exploration Target Competent Person

The information in this report that relates to exploration results and exploration targets and results is based upon information reviewed by Dr. Bruce Rohrlach who is a member of the Australasian Institute of Mining and Metallurgy. Dr. Rohrlach is a full-time employee of Sunstone Metals Ltd and has sufficient experience which is relevant to the style of mineralisation and type of deposit under consideration and to the activity which he is undertaking to qualify as a Competent Person as defined in the 2012 Edition of the “Australasian Code for Reporting of Exploration Results, Mineral Resources and Ore Reserves”. Dr. Rohrlach consents to the inclusion in the report of the matters based on his information in the form and context in which it appears.

*See ASX announcements*

5<sup>th</sup> February 2024 – Limon Exploration Target – Additional JORC Information  
31<sup>st</sup> January 2024 - Limon gold-silver discovery grows  
19<sup>th</sup> December 2023 – Limon gold-silver discovery grows significantly  
27<sup>th</sup> November 2023 – Sustainability Report released  
23<sup>rd</sup> November 2023 – El Palmar gold target, Verde Chico work commencing  
9<sup>th</sup> November 2023 – Large Limon Exploration Target  
18<sup>th</sup> October 2023 – Limon – Bumper results, greatly expands scale  
12<sup>th</sup> October 2023 – Limon drilling growing scale  
18<sup>th</sup> September 2023 – High grade, near surface gold at Limon  
11<sup>th</sup> September 2023 - El Palmar 2nd hole confirms T3 strongly mineralised porphyry  
15<sup>th</sup> August 2023 - Limon gold discovery continues to grow  
3<sup>rd</sup> July 2023 – High grade gold and silver at Limon, Bramaderos  
20<sup>th</sup> June 2023 – El Palmar T3 gold-copper porphyry discovery  
28<sup>th</sup> April 2023 – El Palmar drilling intersects porphyry copper system  
14<sup>th</sup> April 2023 – Limon emerging as major discovery with visible gold in hole  
29<sup>th</sup> March 2023 – Limon epithermal drilling results  
16<sup>th</sup> March 2023 – Drilling commences at T2 porphyry target, El Palmar  
18<sup>th</sup> January 2023 – Limon delivers porphyry discovery  
13<sup>th</sup> December 2022 – Bramaderos MRE and Exploration Target

# About Sunstone Metals

Sunstone has an advanced portfolio of exploration projects in Ecuador. The portfolio comprises:

•**The Bramaderos Gold-Copper Project** where Sunstone owns an 87.5% interest, and SolGold Canada, Inc. (formerly Cornerstone Capital Resources) a subsidiary of SolGold, holding 12.5% (loan carried through to start of commercial production) (see ASX announcement dated 10 April 2017, 28 August 2019, and 7 January 2020). The Bramaderos gold-copper project is located in Loja province, southern Ecuador, and is highly prospective for the discovery of large porphyry gold-copper systems, and high-grade epithermal gold systems. The Bramaderos concession is host to multiple fertile mineralised systems with significant discovery potential.

The Brama-Alba porphyry gold-copper-silver deposit, within the Bramaderos concession contains an initial Mineral Resource estimate of 156Mt at 0.53g/t AuEq for 2.7Moz gold-equivalent\*. In addition to this is the Bramaderos project porphyry gold-copper-silver Exploration Target of between 3.3Moz and 8.6Moz AuEq\* within 255 to 360Mt at a grade between 0.40 and 0.74g/t AuEq\* (see ASX release dated 13 December 2022).

An Exploration Target for the Limon epithermal gold-silver deposit was released on 9th November 2023 (also refer to ASX release dated 5 February 2023) consisting of between approximately 30 and 44 million tonnes at a grade of between 0.9 and 1.2g/t AuEq\*, for between 0.9 and 1.7mill oz AuEq\*

The company confirms that it is not aware of any new information or data that materially affects the information included in the original market announcement for the Mineral Resource estimate and Exploration Target referred to above and, that all material assumptions and technical parameters underpinning the estimates continue to apply and have not materially changed. The company confirms that the form and context in which the Competent Person’s findings are presented have not been materially modified from the original market announcement.

The potential quantity and grade of the Exploration Target is conceptual in nature. There has been insufficient exploration to estimate a Mineral Resource for the target area reported. It is uncertain if further exploration will result in the estimation of a Mineral Resource.

\*The gold equivalent calculation formula for porphyry gold-copper-silver mineralisation is  $AuEq(g/t) = (Au\ grade \times Au\ price \times Au\ recov / 31.1035) + (Ag\ grade \times Ag\ price \times Ag\ recov / 31.1035) + (Cu\ grade \times Cu\ price \times Cu\ recov / 100) / (Au\ price \times Au\ recov / 31.1035)$ . The prices used were US\$1,800/oz gold and US\$9,500/t copper and US\$22/oz silver. Recoveries are estimated at 89% for gold, 85% for copper, and 60% for silver based on metallurgical studies (see ASX release dated 13 December 2022).

\*The gold equivalent calculation formula for epithermal gold-silver mineralisation is  $AuEq(g/t) = Au(ppm) + (Ag\ (ppm)/82)$ . The prices used were US\$1,800/oz gold and US\$22/oz silver. Recoveries are estimated at over 90% for gold and 90% for silver from metallurgical studies (see ASX release dated 9 November 2022).

In Sunstone’s opinion all the elements included in the metal equivalents calculation have reasonable potential to be recovered and sold.

JORC Classification	Tonnage (Mt)	Au (g/t)	Cu (%)	Ag (g/t)	AuEq (g/t)	AuEq* (Mozs)
Indicated	9	0.38	0.09	1.1	0.53	0.2
Inferred	147	0.35	0.11	1.3	0.53	2.5
<b>Total</b>	<b>156</b>	<b>0.35</b>	<b>0.11</b>	<b>1.3</b>	<b>0.53</b>	<b>2.7</b>

•**The El Palmar Copper-Gold Project** where Sunstone holds 70% of the highly prospective 800ha El Palmar gold-copper porphyry project in Ecuador. Sunstone can acquire 100% through a Staged Acquisition Agreement. A Staged Acquisition Agreement to acquire the nearby Verde Chico Project has also been signed. The El Palmar and Verde Chico gold-copper projects are located in Imbabura province, northern Ecuador, within the same geological belt that includes the giant Alpala, Tandayama-America and Llorimagua porphyry copper-gold and copper-molybdenum deposits.



# Ecuador



<b>Capital</b>	Quito
<b>Population</b>	18,320,382 (2024)
<b>Form Of Government</b>	Multiparty republic with one legislative house (National Assembly)
<b>Official Language</b>	Spanish
<b>Total Area (Sq Km)</b>	256,700
<b>Length</b>	650km (~Sydney to Cobar, or ~Perth to Kalgoorlie)
<b>Monetary Unit</b>	US \$
<b>Density: Persons Per Sq Km</b>	71.4
<b>Urban-Rural Population</b>	Urban: 63% • Rural: 37%
<b>Literacy Rate</b>	Male: (2016) 95.4% • Female: (2016) 93.3%
<b>Gross National Income Per Capita (US\$)</b>	6,391
<b>Mining Exports (US\$)</b>	\$3.32 billion in 2023; \$2.78 billion (+25% on 2021, 2021 figure was +541% vs 2019) (by comparison 2022 mining exports from Peru \$37.7 billion)
<b>Exports Top 4 in order</b>	Oil, Prawns, Bananas, Metals

# SUNSTONE METALS



**CALL**  
**+61 7 3368 9888**



**EMAIL**  
**[info@sunstonemetals.com.au](mailto:info@sunstonemetals.com.au)**



**WEB**  
**[sunstonemetals.com.au](http://sunstonemetals.com.au)**



**ASX:STM**